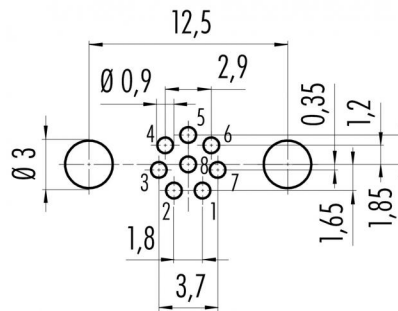


Product description	<b>M8 female panel mount connector, Contacts: 8, shieldable, with shield plate, dip-solder, IP67, M10x0.75, front mounting</b>
Area	<b>M8 series 718</b>
Order number	<b>86 6618 1121 00008</b>

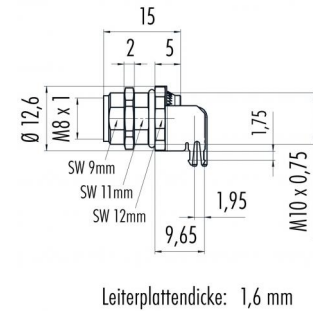
### Illustration



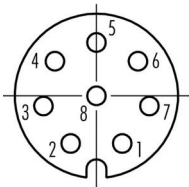
### Conductor layout



### Scale drawing



### Contact arrangement (Plug-in side)



	X	Y
1	0,90	-1,65
2	-0,90	-1,65
3	-1,85	-0,35
4	-1,45	1,20
5	0	1,85
6	1,45	1,20
7	1,85	-0,35
8	0	0

**You can find the assembly instructions on the next page.**

## Technical data

### General values

#### Notice

Please note that, due to the change from the old to the new order number, there may be deviations in the technical specifications. For questions about product details, please use the 'Contact Customer Service' form on the right.  
female panel mount connector  
screw  
dip-solder  
85 °C  
- 40 °C  
85369010  
20

Connector design  
Connector locking system  
Termination  
Upper limit temperature  
Lower limit temperature  
Customs tariff number  
Packaging Unit

### Electrical values

Rated current (40 °C)	1.5 A
Rated voltage	30 V
Rated impulse voltage	800 V
Pollution degree	3
Overvoltage category	II
Insulating material group	II
EMC compliance	shieldable, with shield plate
Degree of protection	IP67
Mechanical operation	> 100 Mating cycles

Product description	<b>M8 female panel mount connector, Contacts: 8, shieldable, with shield plate, dip-solder, IP67, M10x0.75, front mounting</b>
Area	<b>M8 series 718</b>
Order number	<b>86 6618 1121 00008</b>

## Technical data

### Material

Contact material	CuSn (bronze)
Contact plating	Au (gold)
Contact body material	PA
Housing material	Zinc die-cast nickel-plated
REACH SVHC	CAS 80-05-7 (4,4'-isopropylidendiphenol) CAS 7439-92-1 (Lead) CAS 61788-32-7 (Terphenyl, hydrogenated)

Product description

**M8 female panel mount connector, Contacts: 8, shieldable, with shield plate, dip-solder, IP67, M10x0.75, front mounting**

Area

**M8 series 718**

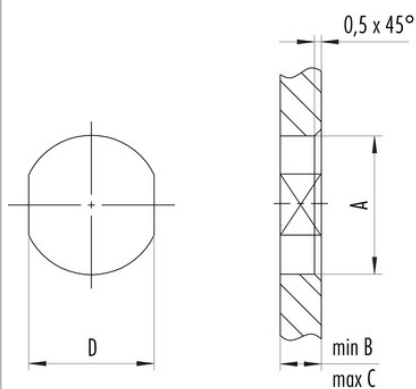
Order number

**86 6618 1121 00008**

## Assembly instructions / Panel cut-out

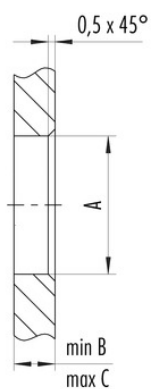
### 1. Einbauvorschlag

Mit Fläche als Verdrehschutz



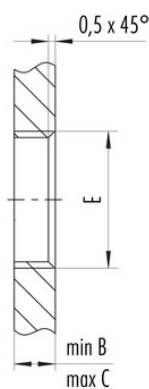
### 2. Einbauvorschlag

Mit Durchgangsbohrung



### 3. Einbauvorschlag

Mit Gewinde, einschraubbar



Gewinde E	A	B	C	D
M8 x 1	8,1	2,0	3,5	7,1
M10 x 0,75	10,1	2,0	6,5	9,1
M12 x 1	12,1	2,5	4,5	10,0

Anzugsdrehmoment 1 Nm

Product description	<b>M8 female panel mount connector, Contacts: 8, shieldable, with shield plate, dip-solder, IP67, M10x0.75, front mounting</b>
Area	<b>M8 series 718</b>
Order number	<b>86 6618 1121 00008</b>

## Security notices

The connectors are designed for use in plant, control system and electrical equipment. The end user is responsible for checking whether the connectors are suitable for use in other applications.

Connectors with degree of protection IP 67 and IP 68 are not suitable for use under water. When used outdoors, the connectors must be separately protected against corrosion. For further information about IP degrees of protection refer to 'Technical support' in the Download Centre.